

Mononotto Inn
M. B. Hoppes Fisher's Island
Suffolk Co. N. Y.

FD Brochure Box 2

1980.170.002 copy 2



MONONOTTO INN

THE MONONOTTO INN

OPENS JUNE 15TH AND CONTINUES UNTIL LATE IN SEPTEMBER

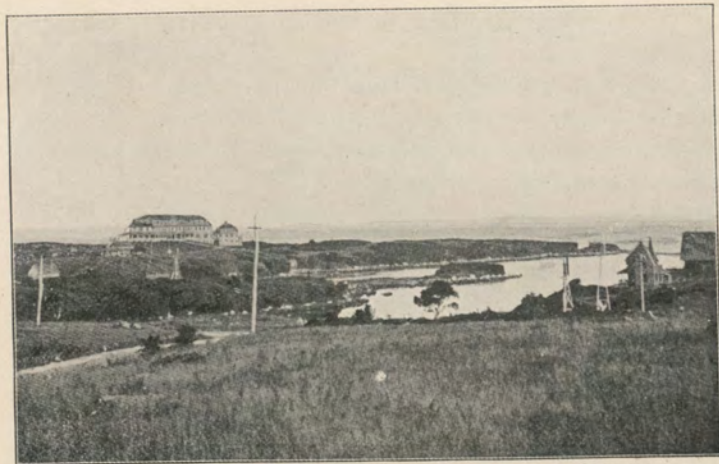
The Inn is a beautiful building, luxuriantly appointed and delightfully located; every room commands a view of ocean and sound.

Applications for rooms will receive prompt attention.

A submarine cable between Fishers Island and New London has been laid, and telegraph and telephone communication can be had with all parts of the country.

Until July 1st, address G. L. HOPPES, Bethlehem, Pa.

After July 1st, address G. L. HOPPES, Fishers Island, N. Y.



THE INN
The Ocean and Long Island Sound in distance

THE MONONOTTO INN

is situated at the west end of Fishers Island, and stands on a bluff which dips into the sea and rises directly from the water's edge. It is surrounded by broad piazzas, whose generous shelter makes an open air promenade always possible, and when natures miles the ocean view is simply superb.

The Building accommodates about 150 guests. An addition of 25 new and elegant rooms, including a Ball Room, and Pool, Billiard and Shuffle Board Rooms, have been added since last season.

FISHERS ISLAND

is situated at the head of Long Island Sound and is 7 miles seaward from New London, Conn. A delightful seashore resort and Summer home, it is very accessible and offers attractions that cannot be found elsewhere.



SAILING ON LITTLE HAY HARBOR

SAILING

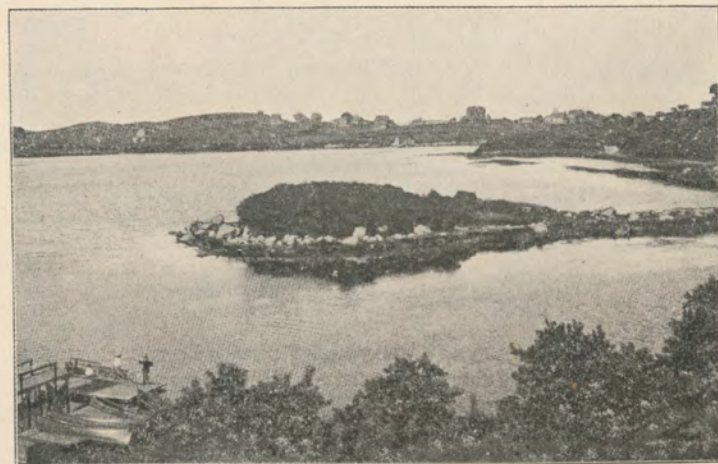
At the boat landing can be found St. Lawrence River row boats and some of the fastest sailing boats on the sound, with old and experienced captains ready to take parties out for a pleasure sail or fishing excursion.



DRIVING AND BICYCLING

There are many fine roads pursuing zigzag courses over the hills and through the valley, along the margin of fresh water lakes, presenting mingled scenery of mainland and ocean never to be forgotten.

“Who'er has traveled life's dull round,
Wher'er his stages may have been,
May sigh to think he still has found
The warmest welcome at an Inn.”



VIEW FROM VERANDA OVERLOOKING LITTLE HAY HARBOR

ATTRACTIONS

No Mosquitoes

No Flies

No Malaria

CLIMATE

"No greater physical enjoyment need be asked for than that of breathing so pure an atmosphere, looking upon so fair a landscape, and listening to the rythmical cadences of the undulating waves. The scene is a synonym for peace, serenity and repose, its very isolation lending a kind of fairy enchantment to the picture." Sudden changes by land breezes are almost unknown. The temperature is cooler by 10 to 20 degrees than that of the mainland.

THE BATHING

is superb ; on the ocean side there are three beaches where can be found the grandest of surf bathing, and still-water bathing can be indulged in most anywhere on the sound side.

FISHING

The best fishing grounds on the Atlantic Coast are close at hand, and the angler will find every variety of fish belonging to this locality.

TERMS

\$3.50 per day; \$17.50 and upwards per week, single rooms; \$35.00 and upwards per week, double rooms. Special rate for families, for guests contracting for the entire season, and for nurses and children

ATTRACTIVE COTTAGES, containing six or more rooms each, will be rented on application.

HOW TO REACH FISHERS ISLAND

From Eastern Massachusetts, New Hampshire and Maine, via Boston.—Trains leave Boston, Old Colony Railroad Station, Park Square, and New England Railroad Station, Kneeland Street.

From Central and Western Massachusetts, New Hampshire and Vermont, via Worcester.—Trains leave Worcester, New England Railroad, Union Station.

From the South and West, via New York.—Trains leave New York: New York, New Haven & Hartford Railroad; Station, Grand Central, 42d Street. Shore Line Division for New London. Steamers of the Norwich Line leave Pier

40, North River (next pier above Desprosses Street Ferry of Penna. Railroad) at 5.30 P. M. daily, except Sunday, for New London direct. Steamers of the Stonington Line leave Pier (new) No 36 North River, at 5.30 P. M. daily, except Sundays, for Stonington.

From Long Island.—By Steamers "Manhaust" and "Sarah Thorp."

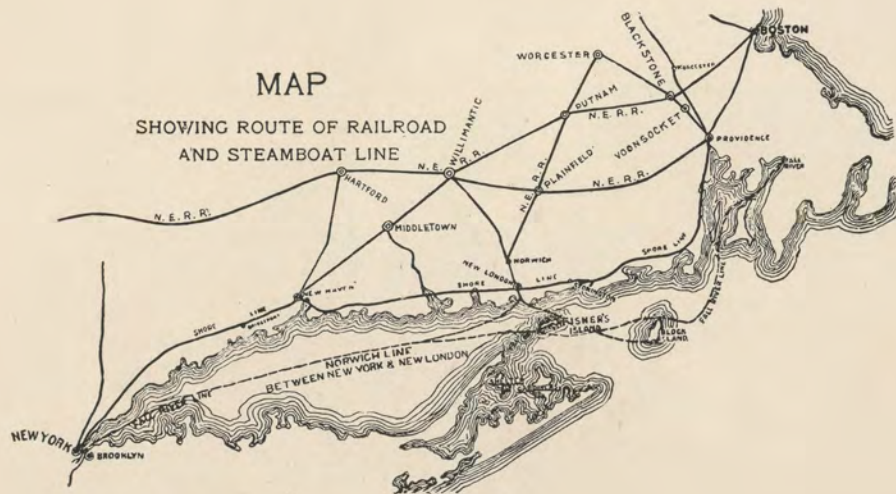
The Steamer "Munnatawket" makes three round trips between Fishers Island and New London, Conn., on week days and one on Sunday, connecting with the express trains from points North, East and West, and with the steamers of the Norwich Line from New York



CAPT. CHAS. E. NASH,
above Desprosses Street
Ferry of Penna. Railroad)



STEAMER "MUNNATAWKET"



LIGHT HOUSES VISIBLE FROM THE VERANDA OF MONONOTTO INN.	DESCRIPTION OF LIGHT.	HEIGHT OF LIGHT ABOVE THE SEA.	SIGNIFICATION OF LETTERS DESCRIBING LIGHTS.
Montauk Point	F V W F	169½ ft.	FW--Fixed White
Gardiner's Island	F W	33	FR-- " Red
Race Rock	Flg R & W	68½	Flg W--Flashing White
Bartlett's Reef Lightship	2 F W	28	Flg R-- " Red
Saybrook's Lyndes Point	F W	73	Flg R & W--Flashing Red and White
Saybrook Breakwater	F W	60	FVWF--Fixed White varied by White Flashes
Cornfield Point Lightship	F A	40	FVR F-- " " " " Red "
New London Harbor	F W	90	FR & FW--Fixed Red and Fixed White
Latimer's Reef	Flg W	56	2 F W--Two Fixed White
Plum Island	Flg W	76	
Watch Hill	F W	62	
North Dumpling	—	—	