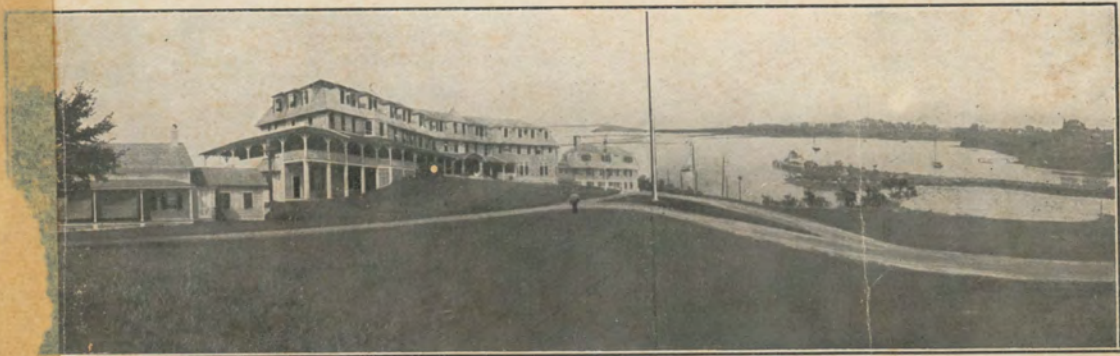


To Pass from Deck



MONONOTTO INN, FISHERS ISLAND, Suffolk County, N. Y.

FISHER'S ISLAND, SUFFOLK Co., N. Y.

Accessible :: Quiet :: Elegant

HISTORICAL

FISHERS ISLAND is situated at the head of Long Island Sound. It was discovered by the Dutch, under Captain Adrian Block in the year 1614. This commander, in a small vessel constructed upon the banks of the Hudson—a yacht called the "Restless"—passed through Hell-Gate into the sound and examined the coast as far east as Cape Cod. Montauk Point he called Fishers Hook, from the employment of the natives, who gained their chief substance from the sea. Fishers Island probably received its name on the same account, or from its being a good position for fishing. He named Block Island after himself, and some historians claim he named Fishers Island after "Visscher," one of his companions. Fishers Island had been a noted fishing ground of the Pequots before their overthrow by Captain Mason and his

men in 1637. After the destruction of the Pequots this fair land lay deserted, unclaimed, waiting for a possessor. Winthrop seized the favorable moment and became the fortunate owner of one of the richest gems of the sound.

The Colonies of Massachusetts and Connecticut claimed the Island as theirs by virtue of the conquest of **Mason**, but lost its jurisdiction under the patent of New York, March 28th, 1668.

For nearly two hundred years it remained in the same family and only passed out of their hands in 1863, when Wm. H. and Thos. R. Winthrop sold it to Geo. Chester, who immediately conveyed it to its late owner, Rob't R. Fox, who dwelt thereon from the time of his purchase, devoting large sums of money and untiring energy to its development and improvement until his death, which occurred September 24th, 1871. In 1889 the main portion of the island, except such parts as had before been sold and improved, was purchased by the present owners, who immediately began to further improve and beautify the property by building roads, docks, family hotels and cottages, and the Island to-day, it is believed, offers attractions as a sea-shore summer resort which cannot be found elsewhere.



SOUTH BEACH—Bathing in the Surf

CLIMATE

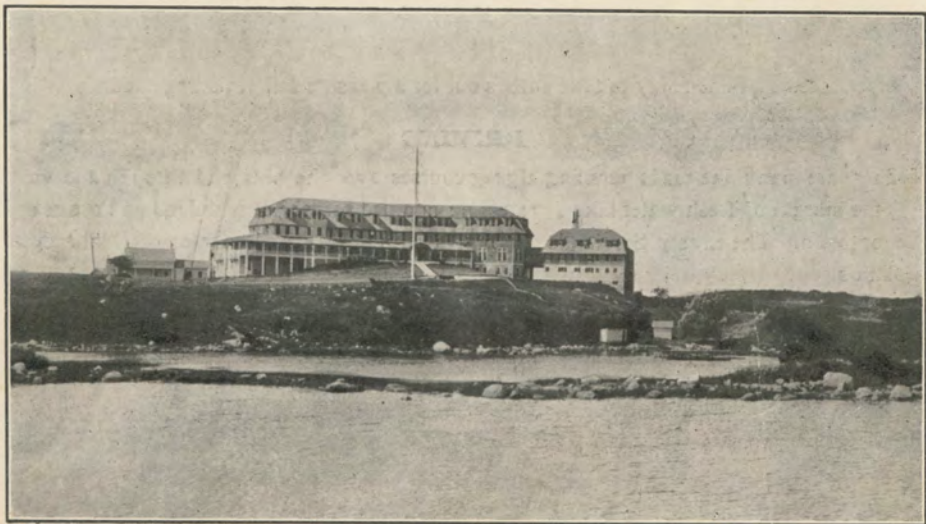
“NO greater physical enjoyment need be asked for, than that of breathing so pure an atmosphere, looking upon so fair a landscape, and listening to the rythmical cadences of the undulating waves. The scene is a synonym for peace, serenity and repose, its very isolation lending a kind of fairy enchantment to the picture.” Sudden changes by land breezes are almost unknown. The temperature is cooler by 10 to 20 degrees than that of the mainland.

THE BATHING

Is superb; on the ocean side there are three beaches where can be found the grandest of surf bathing, and still-water bathing can be indulged in most anywhere on the sound side.

FISHING

The best fishing grounds on the Atlantic Coast are close at hand, and the angler will find every variety of fish belonging to this locality.



LITTLE HAY HARBOR

SAILING

At the boat landing can be found some of the fastest sailing boats on the sound, with old and experienced captains ready to take parties out for a pleasure sail or fishing excursion.

DRIVING

There are many fine roads pursuing zigzag courses over the hills and through the valley, along the margin of fresh water lakes, presenting mingled scenery of mainland and ocean never to be forgotten. The Livery Service is the best and includes saddle horses of Kentucky and Carolina stock.

TELEGRAPH CONNECTIONS

A sub-marine cable between the Island and New London has been laid and telephone and telegraph communications can be had with all parts of the country.

"Prince Mononotto sees his squadrons fly,
And on our general having fixed his eye,
Rage and revenge his spirits quickening,
He sets a mortal arrow in the string."



WILD SURF—BLACKFISH ROCK. North of Inn.

ELECTRIC LIGHT

The Inn and Cottages are supplied with electric light furnished by the Fishers Island Electric Light, Heat and Power Company.

STEAM LAUNDRY

A separate building has been erected with modern steam plant.

MUSIC and AMUSEMENTS

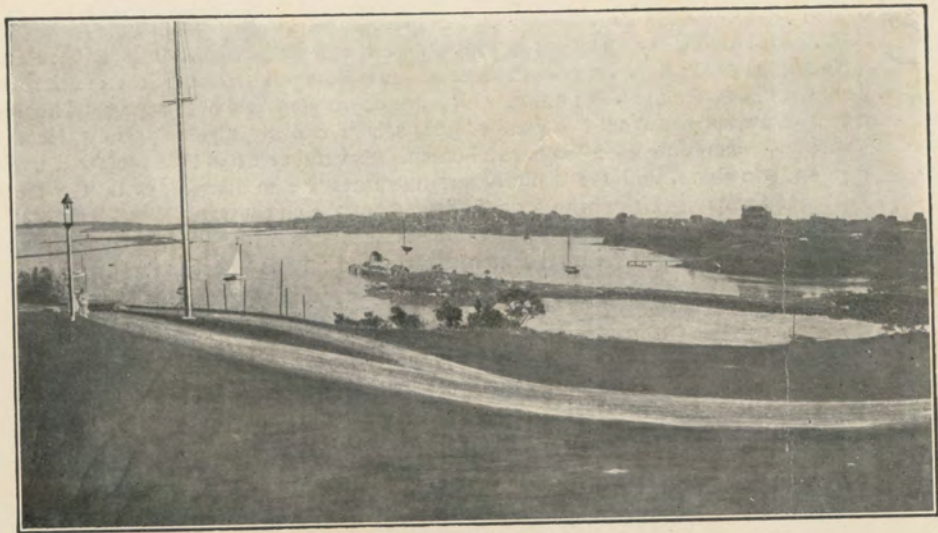
The Mononotto Inn Orchestra have again been engaged for the coming summer season. Billiards, Pool, Shuffle Board, Tennis, etc.

GOLF

A Nine-hole Golf Course and Club House equipped with all necessary accessories.

MILK, VEGETABLES, ETC.

Fishers Island has one of the finest stock, dairy and truck farms in the country. Fresh vegetables from our own gardens. The Island abounds in springs of surpassing pureness and ice of the best quality is cut from a chain of fresh water lakes.



LITTLE HAY HARBOR. Looking North

MO-NO-NOT-TO INN is situated on the west end of Fishers Island and stands on a bluff which dips into the sea and rises directly from the water's edge. It is a beautiful building, surrounded by very broad piazzas whose generous shelter makes an open air promenade always possible, and when nature smiles, the ocean view is simply superb. The Inn (and cottages) accommodates about two hundred guests, is luxuriously appointed, and so located that every room commands a view of sound and ocean. Especial care has been bestowed upon the drainage and plumbing, and the sanitary arrangements are in keeping with the most advanced ideas of the day. There is an abundant supply of the purest water.

"Mononotto was a noted Pequot—brother to Sassacus—his wife, "Wincumbone" was instrumental in saving the life of an Englishman as disinterestedly as "Pocohontas" saved that of Capt. Smith."

"Who'er has traveled life's dull round,
Wher'er his stages may have been,
May sigh to think he still has found
The warmest welcome in an Inn."

TERMS—\$3.50 per day ; \$17.50 and upwards, per week, single rooms ; \$35.00 and upwards, per week, double rooms. Special rate for families, for guests contracting for the entire season, and for nurses and children. Season opens June 15th, 1906. For further particulars address,

G. L. HOPPES, Bethlehem, Pa.

After July 1, address G. L. Hoppes, Fisher's Island, Suffolk Co., N. Y.

NEW AND ATTRACTIVE COTTAGES, containing six or more rooms each, will be rented on application. Cottages are supplied with electric lights, modern plumbing, hot and cold water, etc.

HOW TO REACH FISHERS ISLAND

From Eastern Massachusetts, New Hampshire and Maine, via Boston.—Trains leave Boston, South Station, N. Y. N. H. & H. R. R.

From Central and Western Massachusetts, New Hampshire and Vermont, via Worcester.—Trains leave Worcester, N. Y. N. H. & H. R. R., Union Station.

From the South and West, via New York.—Trains leave New York: New York, New Haven & Hartford R. R. Station, Grand Central, 42nd Street. Shore Line Division for New London. Steamers of the Norwich Line leave

Pier 40, North River (next pier above Desbrosses Street Ferry of Penna. R. R.) at 6.00 P. M. daily, except Sunday, for New London direct.



STEAMER "RESTLESS"



CHAS. E. NASH
Capt. Str. "Restless"

From Long Island.—

By Steamers "Manhaust" and "Sarah Thorpe."

The Steamer "Restless" makes five round trips between Fishers Island and New London, Conn., on week-days and two on Sundays, connecting with the express trains from points North, East and West, and with the steamers of the Norwich Line from New York.

From my scrapbook - about 1909-10.

N.D.



2016.060.086 FI Brochure Box 2