

Fisher's Island



E. M. & W. FERGUSON
OWNERS

FI Brochure
Box 1 1994.004.001

94.4.6

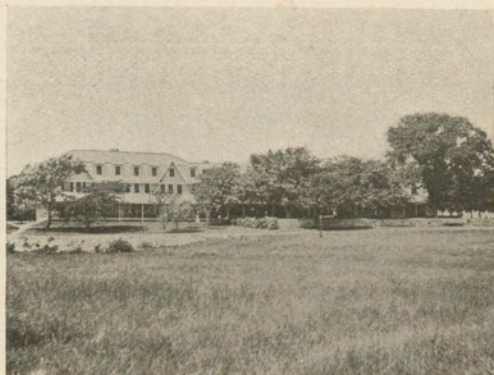
copy 1
Pamphlet Shelf

The Mansion House and
The Munnatawket Hotel
↵ ↵ and Cottages ↵ ↵

A. T. HALE, - M A N A G E R



On Fisher's Island, seven miles off
New London, Conn.



EAST VIEW OF MANSION HOUSE.

FISHER'S ISLAND

AS almost everybody knows, is located in the Sound about seven miles off New London, Conn.

For explanation of how to reach it see pages 15 and 16, where a map of the Island is also shown.

The Island is about nine miles in length with beautiful harbors penetrating well into its center and high promontories commanding views of the sea.

The Munnatawket Hotel is so named because the Pequot Indians gave this title to the Island when they came there to fish and plant corn before the days of the white man.

History

The Island was discovered by the Dutch in the year 1614 and was named, by Capt. Adrien Block, Visscher's Island after one of his companions, the present name being derived from this.

In 1640 a grant of the Island was made to John Winthrop by Massachusetts. He later confirmed his title by obtaining not only the assent of the Hartford Court but by purchase direct from the Indians; and the Island was the property of the Winthrop family until 1863, passing into the hands of the present owners E. M. & W. Ferguson, in 1889. They began immediately to improve and beautify the property by building roads, docks, family hotels and cottages, and the Island today it is believed, offers attractions as a sea-shore summer resort which cannot be found elsewhere.

Climate

The climate and situation of Fisher's Island peculiarly fit it as a place of summer resort. In this respect its advantages are unrivaled.



DOCK SCENE: WEST HARBOR.



A GOOD CATCH.

New London, Stonington, Mystic and Watch Hill, on the Connecticut shore, all in sight, have long been known for their healthfulness. Encircled by salt water the climate of Fisher's Island is affected thereby, and on an average the temperature is at least 10 degrees lower than on the main land.

Bathing, Fishing, Etc.

The bathing is excellent. On the ocean side there are three beaches where can be found the grandest of surf bathing, while still water bathing can be indulged in almost everywhere on the Sound side. The fishing in the immediate vicinity of the hotels is excellent, and all the varieties of fish common to this latitude can there be caught.

The island abounds in springs of surpassing pureness, and the hotels and cottages have a never failing supply of the purest water.

Roads and Drives

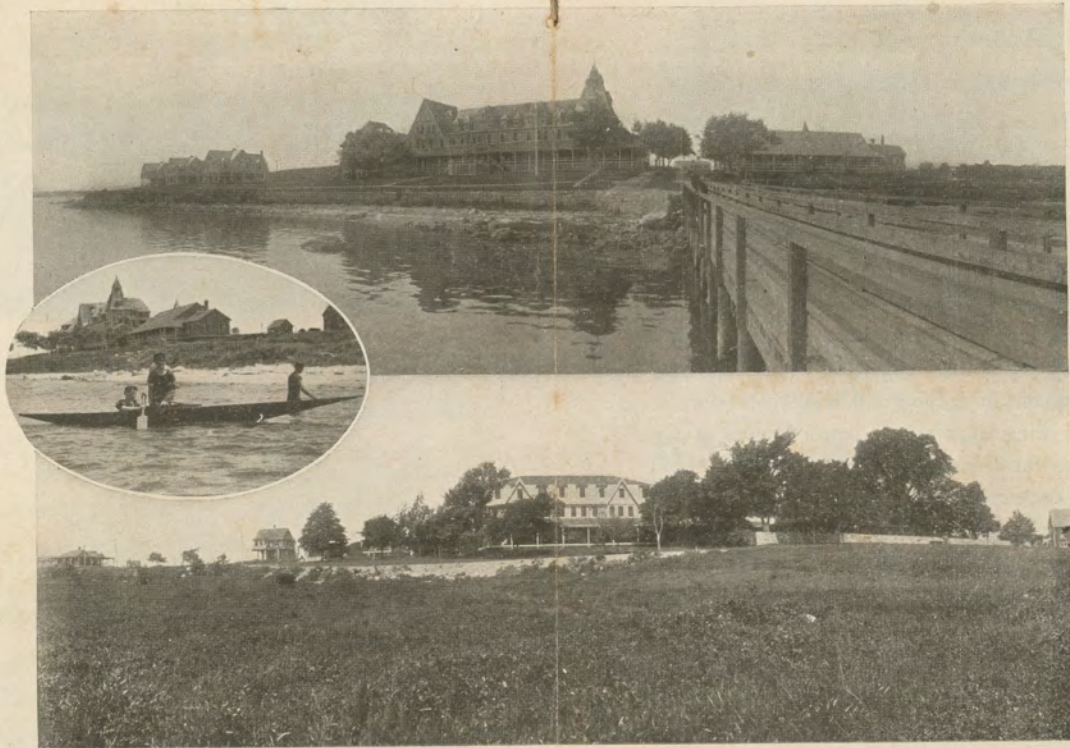
Splendid substantial roads have been built at large expense and the drives are charming. The livery service is of the best and includes saddle horses of Kentucky and Carolina stock, as well as a number bred and raised on the stock farm belonging to the owners of the Island. Horses of guests will receive the best of care by experienced grooms.



SOME OF OUR COTTAGES.



LITTLE HAY HARBOR WITH MANSION HOUSE COTTAGES.



MUNNATAWKET HOTEL AT TOP AND MANSION HOUSE BELOW.

FOR LOCATION OF HOTELS ON THE ISLAND SEE MAP ON PAGE 16.

A number of those who annually visit the Island occupy their own cottages, but

The Munnatawket Hotel and The Mansion House and Cottages

provide most comfortable accommodations not only for transient visitors but for those who wish to be more free from domestic care than is possible with housekeeping cottage life.

The Cottages in connection with these hotels number twenty-two.

Eleven are arranged for housekeeping, with kitchen and dining room fully equipped, and eleven contain sleeping and living rooms only, meals being taken at the hotels located at a convenient distance.

Housekeeping cottages vary from 7 to 15 rooms; the others contain from 6 to 10 rooms.

Diagrams showing location, sizes of cottages, etc. will be sent on request.

The "MUNNATAWKET" HOTEL is directly on the water, on the north side of the island, with fine views of the Connecticut shore; the Mansion House is on beautiful Hay Harbor.

They have a good table of course and all the usual good things that go with properly run houses; or at least we claim this for them and you can only be sure about these things



MORE OF OUR COTTAGES.



SOUTH BEACH.

by coming down to see us, or talking with someone who has.

There isn't a dull moment for anyone who cares to :

WALK OR DRIVE,
SAIL, ROW OR FISH,
PLAY GOLF, TENNIS OR CROQUET,
BILLIARDS, POOL, ETC.

Even more important, however, than the items mentioned above is the air of comfort and refinement which prevades these hotels; their big fire places, where on cool evenings the logs crackle, and over all is the atmosphere of a true summer home.

We feel that it would not do for us to neglect to mention a number of things said in all well regulated summer resort literature.

All employees are civil and attentive to the wants of guests.

The houses have recently been enlarged and re-furnished, and extensive additions made.

Nearly all the rooms are large and airy.

Long distance telephones are in the hotel offices.

The Munnatawket Hotel accomodates 175 and the Mansion House 150 guests.

Both hotels are equipped with electric light.

An orchestra plays at each hotel daily.



SOUTH VIEW OF MANSION HOUSE.



LITTLE HAY HARBOR.

While we have touched but briefly on the beauty of this lovely island and the comfort of its Hotels, we trust we have said sufficient so that you may have the desire to investigate for yourself.

We shall be pleased to furnish additional details on application, and to forward photographs of the house and surroundings to those interested.

The Mansion House opens for guests May 1st.

The Munnatawket Hotel opens about July 1st.

Rates at either hotel are \$4.00 per day, with special rates for families.

A. T. HALE, Manager,
Fisher's Island, N. Y.,
Via New London, Conn.

FISHER'S ISLAND

CAN BE REACHED AS FOLLOWS:

From New York:

By Norwich Line of Steamers and New York, New Haven & Hartford Railroad.

From Boston, Providence, Worcester, Hartford and Springfield:

By New York, New Haven & Hartford Railroad.

From Montreal and Brattleboro:

By Central Vermont Railroad.

All of the above connect at New London with the steamers of the Fisher's Island Navigation Company which make seven round trips daily, leaving pier in front of station and connecting with all principal trains.

The Steamer Restless, 150 feet in length, has been built expressly for this route to meet the increasing travel.

Baggage can be checked on application, to and from all principal points on New York, New Haven & Hartford and Pennsylvania Railroads on payment of transfer charges.

See map and important train notice on next page.

NEW LONDON, CONN.



IMPORTANT NOTICE.

On Monday morning an early boat will leave the Island connecting with
first expresses to New York and Boston.

Time tables sent on application.