

F I S H E R ' S
I S L A N D



Mansion House
and
Cottages

Mrs. Ada P. Phillips

The
MANSION HOUSE
and COTTAGES

at FISHER'S
ISLAND



WM. F. INGOLD
M a n a g e r
P.O. FISHER'S ISLAND N.Y.

New York Office, Hotel Arlington
18 W. 25th St. Phone 2606 Madison



FISHER'S ISLAND

The Mansion House and Cottages

FISHER'S ISLAND is located at the entrance of Long Island Sound, about thirty minutes from New London, Conn.

For explanation of how to reach it, also a map showing the location of the Island, see page 25.

The Island is about nine miles in length, with beautiful harbors penetrating well into its center and high pro-

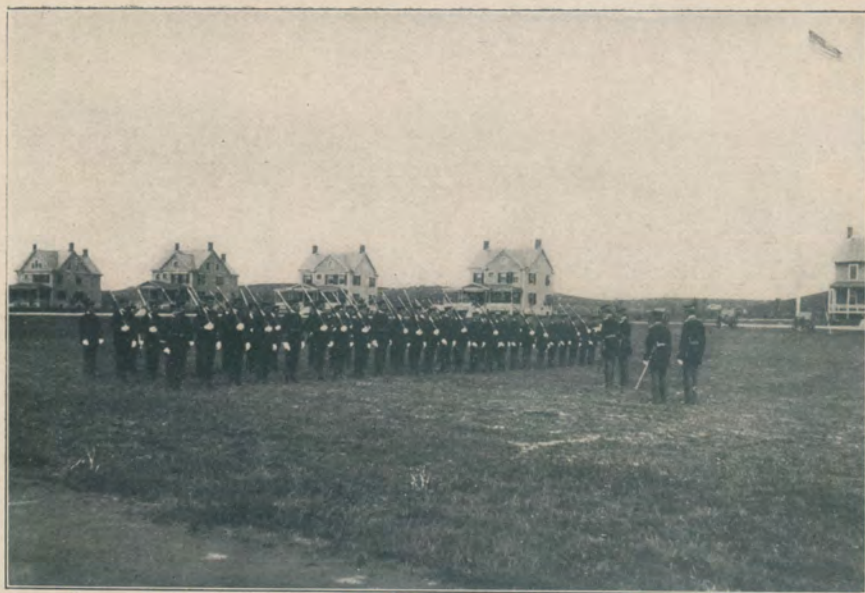




THE PARADE GROUND

mentories commanding views of the sea and the Connecticut shore.

In 1898 the U. S. Government commended the erection of modern fortifications which have been named for a famous general of the Civil War, Fort H. G. Wright. Fort Wright is the headquarters of the military district,



AT FORT WRIGHT

is commanded by a colonel, has several companies of Coast Artillery, and a fine band.

The island abounds in springs of surpassing pureness. In 1905 a power house was built at the Barlow Pond, and a main laid to the hill in rear of the Mansion House, a large reservoir

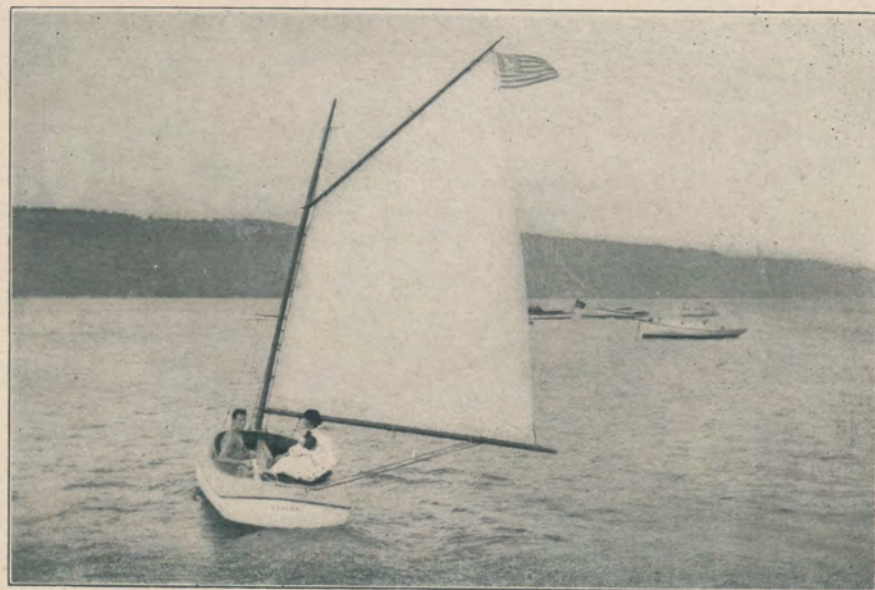




built, and now the Island has a fine water system, thus affording an unfailing supply of pure spring water, from which is also supplied Fort Wright.

Bathing, Fishing, etc.

The bathing is excellent. On the ocean side are three beaches, where can



be found the grandest of surf bathing, while still-water bathing can be indulged in almost everywhere on the Sound side. The fishing in the immediate vicinity of the hotel is excellent, and all the varieties of fish common to this latitude can there be caught.





A COOL, SHADY DRIVE THROUGH THE WOODS

Roads and Drives

Splendid substantial roads have been built, and the drives are charming. The livery service is of the best, and includes good saddle and driving horses, a number of which were raised on the Island. Horses of guests will



receive the best of care by experienced grooms.

The Mansion House and Cottages

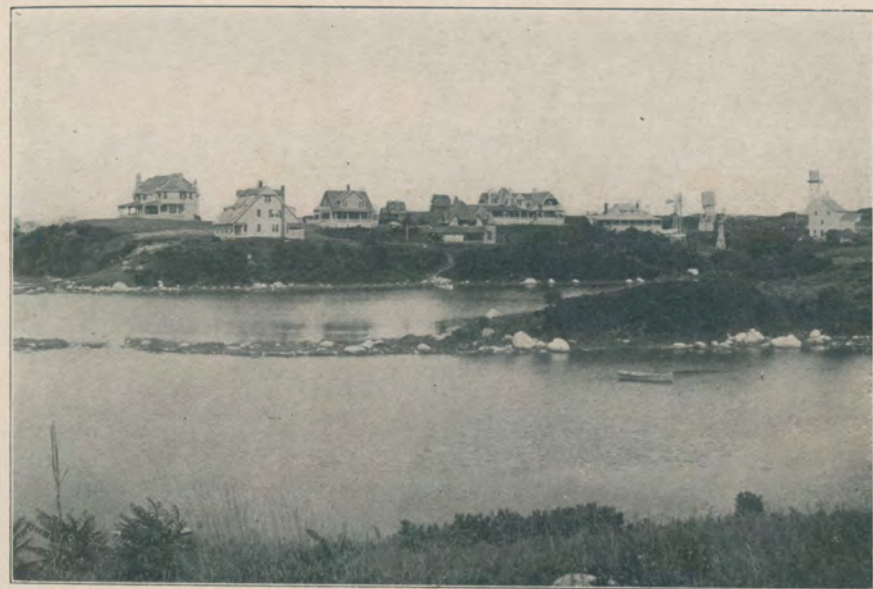
Provide most comfortable accommodations not only for transient visitors, but for those who wish to be more





free from domestic care than is possible with housekeeping cottage life.

The hotel has been recently enlarged and refurnished and extensive additions made, including suites with private bath. All the rooms are light and airy and have closets. A long distance telephone is in the hotel office.



The hotel accommodates 150 guests. It is equipped with electric light, as are also the cottages.

The hotel table and service are excellent. All milk, cream, eggs, poultry, and vegetables are supplied fresh daily from the Mansion House farms.

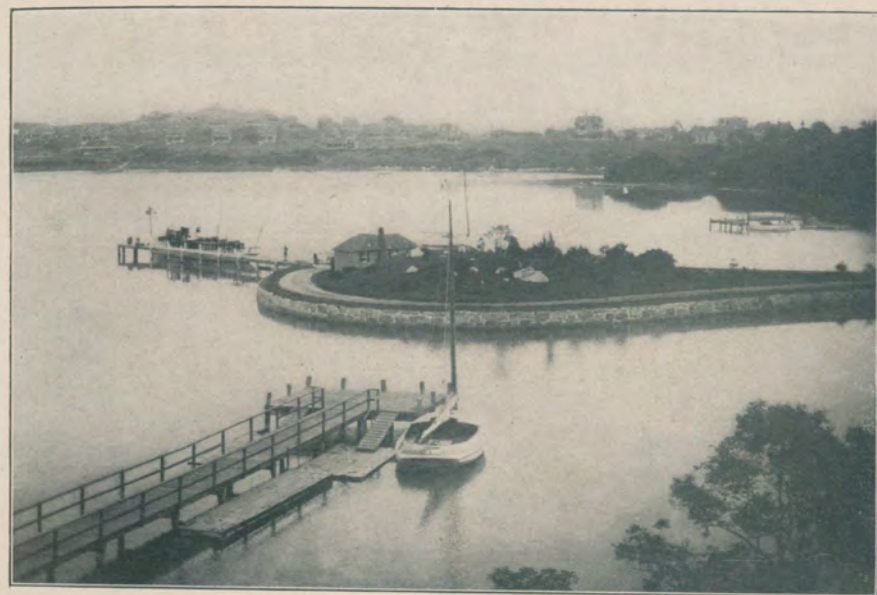




OFFICERS' ROW, FORT WRIGHT

There isn't a dull moment for anyone who cares to walk, drive, or ride; bathe, sail, row or fish; play golf, tennis or croquet. Boating, billiards, pool, bowling.

Band concerts; dress parade at the Fort. Orchestra concerts twice daily in



the ballroom of the hotel, by French's orchestra, famous for its dance music, the same that has furnished music at the Hotel Hamilton, Bermuda, for fifteen years.

Even more important, however, than the items already mentioned, is





the all-pervading air of comfort and refinement, which cannot be described in the limits of this booklet. On cool evenings logs crackle in the big fireplace, and over all is the atmosphere of a summer home.

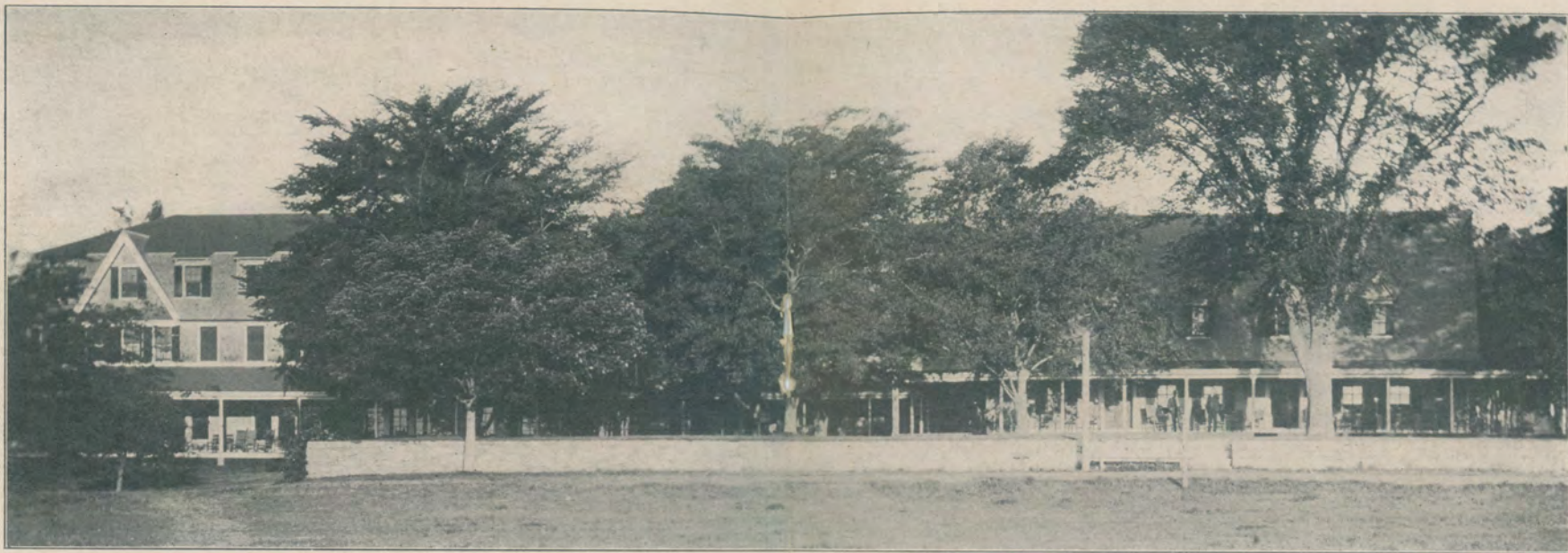


THE COTTAGES

There are Twenty-four

TWELVE are arranged for house-keeping, with kitchen and dining-room. Twelve contain sleeping and living rooms only, meals being taken at the hotel located at a





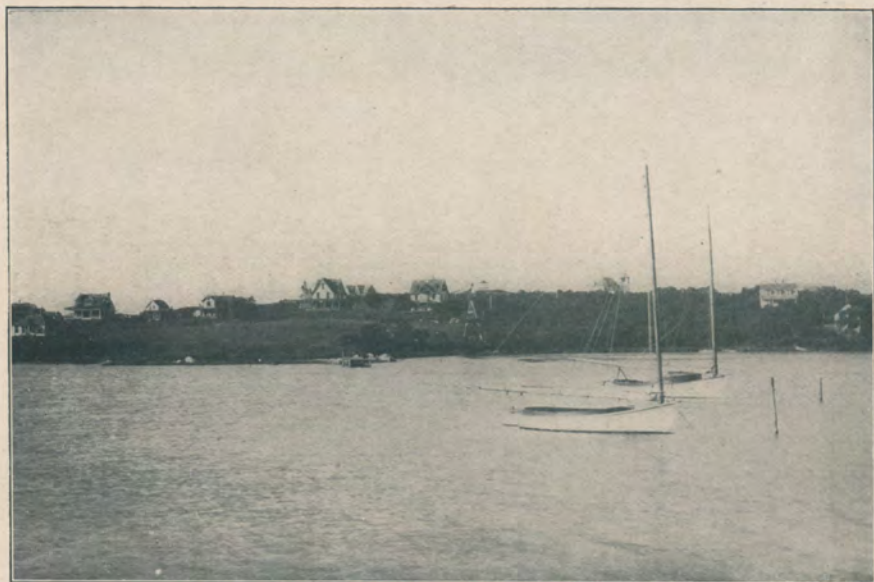
THE SHADY SIDE OF THE MANSION HOUSE

HISTORIC

THE Island was discovered by the Dutch in the year of 1541 and was named by Capt. Adrien Block, Visscher's Island, after one of his companions, the present name being derived from this.

In 1640 a grant of the Island was made to John Winthrop by Massachusetts. He later confirmed his title by obtaining not only the assent of the Hartford Court but by purchase direct from the Indians, and the Island was the property of the Winthrop family until 1863, passing into the hands of the present owners, E. M. & W. Ferguson, in 1889. They began immediately to improve and beautify the property by building roads, docks, a family hotel and cottages, and the Island today, it is believed, offers attractions as a seashore summer resort which cannot be found elsewhere.





convenient distance, and connected by concrete walks. It is not necessary to bring service for the non-housekeeping cottages, as we take entire care, furnishing the chambermaid, hall boy and porter service, with electric bell to hotel office. Non-housekeeping cottages contain from five to seven bed-



rooms, bathroom, and in almost all of them two toilets and a small kitchen, with range for heating water for the bath. Parlor and sitting-rooms.

Housekeeping cottages contain from nine to thirteen bedrooms, two toilets, always one bath and in some cases two, parlor, sitting-room, dining-room, but-





THE THREE CHURCHES
EPISCOPAL, CATHOLIC, UNION

ler's pantry, servants' dining-room, and kitchen. Cellars have set tubs, hot-air heaters, etc. Diagrams and photographs of all cottages sent on application.

While we have touched but briefly on the beauty of this lovely Island and the comfort of its hotel, we trust



A STREET IN FORT WRIGHT

we have said sufficient so that you may have the desire to investigate for yourself.

We shall be pleased to furnish additional details on application and forward photograph of the house and surroundings to those interested.





The Three Cottages

These are all housekeeping cottages and within five minutes' walk of steamboat landing.



Rates are \$4.00 per day, with special weekly rates.

WM. F. INGOLD, Manager,
FISHER'S ISLAND, N. Y.
Via New London, Conn.

New York Hotel:
HOTEL ARLINGTON, 18 W. 25th St.
TELEPHONE 2606 MADISON SQUARE.

Where diagrams and photographs can be seen, reservations made, and full particulars given.



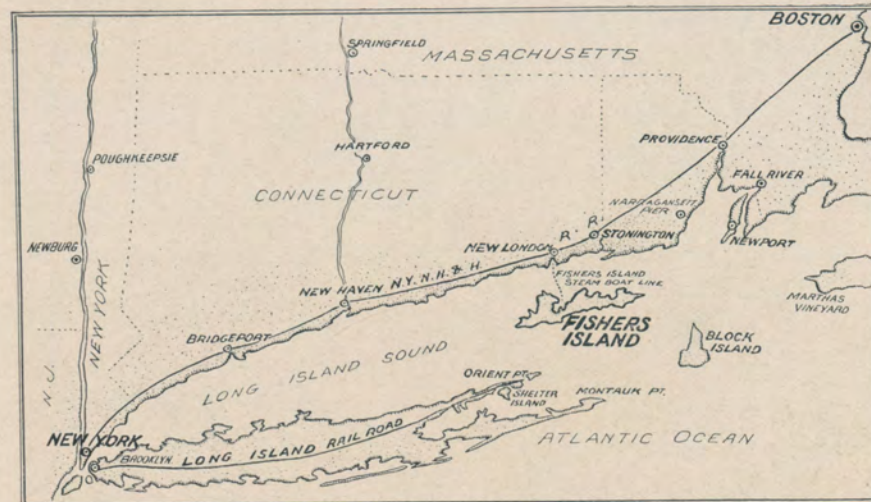


FISHER'S ISLAND

Can Be Reached as Follows:

From New York:

By New York, New Haven & Hartford Railroads and Norwich Line of Steamers.

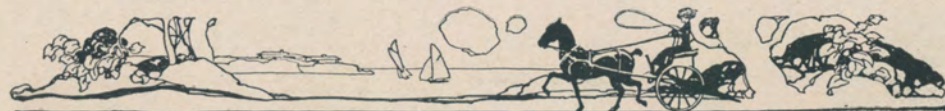


From Boston, Providence, Worcester, Hartford and Springfield:

By New York, New Haven & Hartford Railroad.

From Montreal and Brattleboro:

By Central Vermont Railroad.





STEAMER "RESTLESS"

All connect at New London with the steamers of the Fisher's Island Navigation Company, which make five round trips daily, leaving pier in front of station and connecting with all principal trains.

The Steamer "Restless," luxuriously equipped, and 150 feet in length, has been



built expressly for this route to meet the increasing travel.

Baggage can be checked through to Fisher's Island on application to Transfer Co., from all principal points on New York, New Haven & Hartford and Pennsylvania Railroads on payment of transfer charges.

See map on page 25.





This is a typical housekeeping cottage. They are all well built, nicely furnished, and have modern conveniences, including electric light.



MUNNATAWKET HOTEL AND ANNEX

Owned and controlled by the proprietors of the Mansion House, and having a very pleasant situation, offers accommodations at reasonable rates to families wishing more moderate prices than offered at the Mansion House.





HOTEL ARLINGTON

18-20 WEST TWENTY-FIFTH STREET
Near Broadway and Fifth Avenue
NEW YORK

☞ A new, modern, high class hotel for refined people. A very desirable place to stop when in New York, beautifully furnished and comfortably arranged.

ROOMS AT FOLLOWING RATES

Rooms with lavatories	- - - - -	\$1.50, \$2.00, \$2.50 per day
Rooms with private bath	- - - - -	\$2.00, \$2.50, \$3.00, \$4.00 per day
Sitting room, Alcove bedroom and bath	- - - - -	\$3.00 to \$4.00 per day
Suites—Sitting room, bedroom and bath	- - - - -	\$4.00, \$5.00, \$6.00, \$7.00 per day
Suites—Sitting room, two bedrooms and bath	- - - - -	\$7.00 to \$10.00 per day

☞ The sitting room of all suites can be arranged as a bedroom if so desired, thus accommodating parties comfortably and very reasonably. ☞ The Hotel Arlington is quiet and accessible, convenient to all lines of transportation. In the center of the theatre and shopping district. We know that we can please you. Write us when you are coming to New York and let us reserve accommodations for you.

WM. F. INGOLD }
T. E. TOLSON } *Managers*