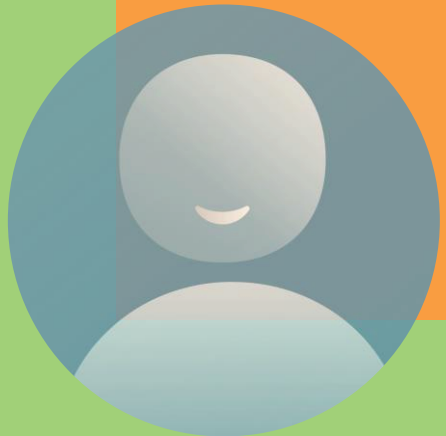
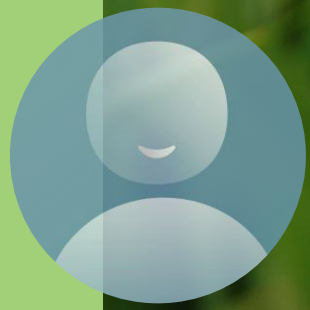


Our Natives and Invasives

Terry McNamara





Grass-leaved Lady Tresses



Slender Blue Iris



Dwarf
Umbrella
Sedge



NYNHP Botanist Katie
Becks with Seabeach
Sandwort



Square-Stemmed Monkey-
Flower

98% of the eelgrass in NYS exists around Fishers Island



Fishers Island Seagrass Coalition



Seagrass Coalition

Discover and communicate actions to ensure eelgrass survival







Insects



Caterpillars





Regal Moth
(*Citheronia regalis*)



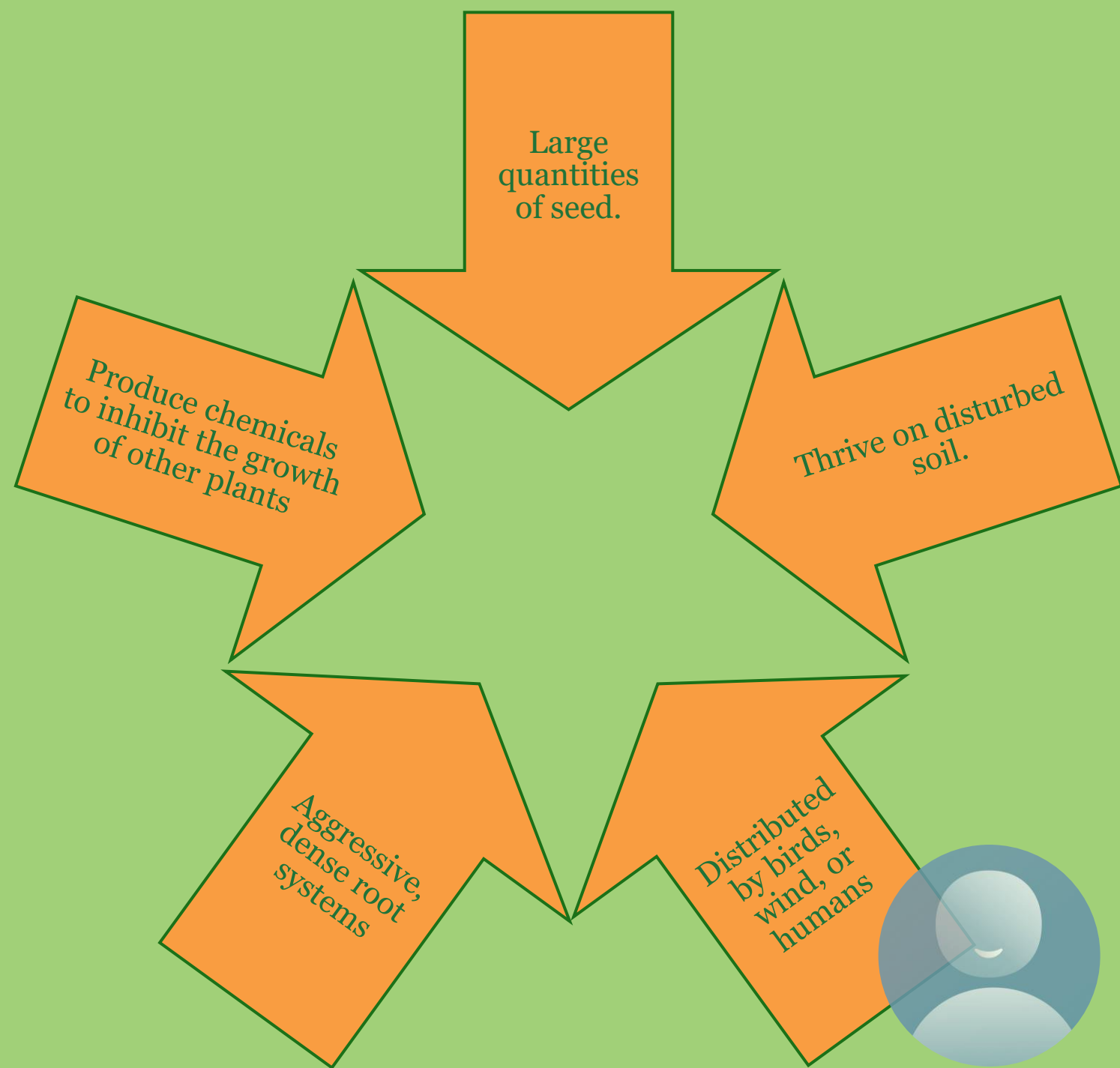


The coyotes also show a taste for feral cats and raccoons, two species that threaten our bird populations

In addition to a taste for watermelon on the Hay Harbor Golf Course next to the NUWC on the West End



Invasive Plant Characteristics





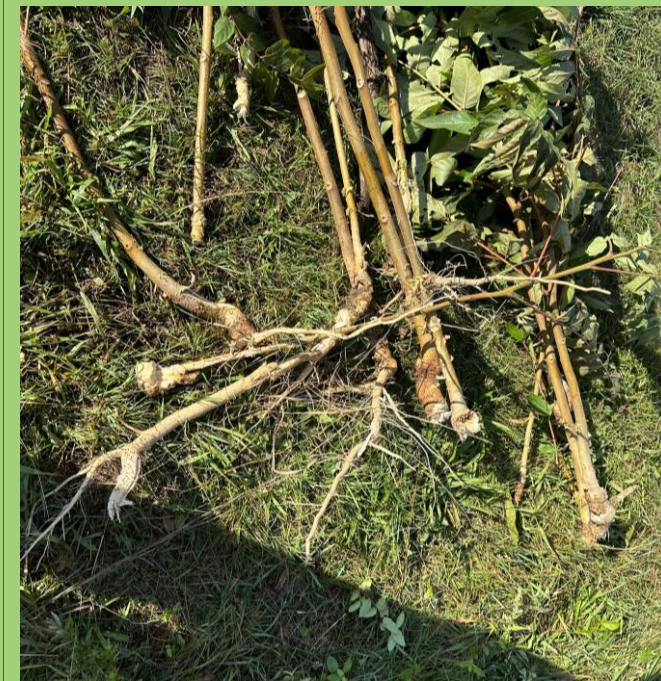
Phragmites- root
structure unearthed
by the Land Trust
Trail Dogs



Oriental Bittersweet, English Ivy, Wisteria

- The Oriental bittersweet has an orange-colored root
- The English Ivy is an invasive ground cover as well
- The Wisteria strangles understory trees

Tree of Heaven: Chinese Stink Tree



Crushed or broken
leaves have a vile
odor



Mugwort

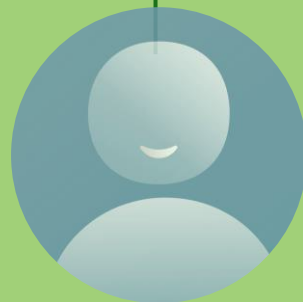


Matures to dense thickets, three feet high with a network of shallow roots

Garlic Mustard



Displaces native vegetation in the forest understory and edges



Japanese Knotweed



Knotweed is probably our greatest invasive threat edges

Privet Hedge



Privets colonize trail

